

# THE TWENTIETH ALDEBURGH POETRY FESTIVAL

7–9 November 2008

# THE FUNDERS & SUPPORTERS

The Poetry Trust gratefully acknowledges the substantial support of Arts Council England and Arts Council England, East. We thank them for their recognition and continued investment in us as a flagship organisation for literature.



## **The Poetry Trust**

The Cut, 9 New Cut, Halesworth, Suffolk IP19 8BY

**Telephone:** 01986 835950

**Email:** info@thepoetrytrust.org

**Website:** www.thepoetrytrust.org

**Registered Charity No.** 1102893

**Company Limited No.** 5047225

Additional thanks to the following for their invaluable contributions to the Festival:

## **CHARITABLE TRUSTS & FOUNDATIONS**

The Fenton Arts Trust  
The Jerwood Charitable Foundation  
The John S Cohen Foundation  
The Paul Hamlyn Foundation  
The Idlewild Trust  
The Limbourne Trust  
The Scarfe Charitable Trust  
The Tolkien Trust  
The Woo Charitable Foundation

## **FESTIVAL SPONSORS**

East Anglian Daily Times  
Fairweather Stephenson & Co., Solicitors  
Ink, Sweat & Tears  
The Rialto

## **FESTIVAL SUPPORTERS**

The Aldeburgh Bookshop  
The Arvon Foundation  
Bloodaxe Books  
Centro Mallorca  
Embassy of the United States, London  
New Writing Partnership  
The Poetry Book Society  
The Poetry School  
Suffolk Artlink  
Suffolk Coastal District Council  
The White Lion Hotel, Aldeburgh



---

**THIS PROGRAMME IS AVAILABLE  
IN A LARGE PRINT, TEXT ONLY  
VERSION ON REQUEST.  
TELEPHONE: 01986 835950**

**T**

twenty years of the Aldeburgh Poetry Festival and so much to celebrate: the continued integrity and originality of its programme, growth without dilution of quality, local roots and global reach.

Two decades on and the essence remains: the power of live poetry, the passion for the artform, the buzz and the lasting benefits for audiences and poets. Twenty-two of them this year – from America, Australia, China, Ireland, South Africa and the UK – will feature across forty-four events (thirteen entirely free). As always the programme continues to evolve, but now there's a new dimension.

The Poetry Channel goes live this autumn, welcoming audiences all over the world to imaginatively curated audio highlights from this and from past Festivals. Already synonymous with the presentation of outstanding live events, The Poetry Trust is going digital – to make an exceptional virtual space for poetry.

Come in person to Aldeburgh this November if you can. It's always the ultimate poetry weekend. Or visit later, from anywhere you like, online: [www.thepoetrytrust.org](http://www.thepoetrytrust.org)

Naomi Jaffa

# THE PROGRAMME

## EVENT & WORKSHOP VENUES

The Poetry Trust makes every effort to meet disability needs but regrettably, not all venues can offer full accessibility to the disabled or to those with access and mobility requirements. See below for details or check with the Box Office (01728 687110) when booking.

**Jubilee Hall** (capacity 235)

fully accessible, stairlift, induction loop, disabled toilet

**James Cable Room** (capacity 100)

6/8 steps from front/rear hotel entrances

**Peter Pears Gallery** (capacity 90) fully accessible, stairlift

**Cinema Gallery** (capacity 40) first floor, no lift / stairlift

**Aldeburgh Music Room** fully accessible, disabled toilet

**Aldeburgh Church Hall** fully accessible, disabled toilet

**Baptist Chapel** fully accessible, disabled toilet

## THE EXHIBITION

### NOTHING BUT HEATHER!

**Peter Pears Gallery, open throughout the weekend**

The poet **Gerry Cambridge** is also a superb professional photographer whose teenage passion for wildlife continues unabated. A selection of his astonishingly intimate close-ups – including a great water-boatman, short-eared owl, large elephant hawk moth, wolf spider and many other examples of Scottish flora and fauna.

The exhibition is based on Gerry's book *Nothing But Heather! Scottish Nature in Photographs, Poems & Prose*, one of the fruits of his two years as the Brownsbank Fellow living in Hugh MacDiarmid's last home in Lanarkshire.

**EXHIBITION PREVIEW & RECEPTION TO  
LAUNCH THE FESTIVAL, 6.00 – 7.30PM  
THURSDAY 6 NOVEMBER  
PETER PEARS GALLERY, ALL WELCOME**

# FRIDAY 7 NOVEMBER

Jubilee Hall 6.00 – 7.00pm PF1 £6

## FAMILY READING: MATT SIMPSON

The gifted young winners of our annual Suffolk Young Poets Competition read their marvellous poems. They are joined by **Matt Simpson** with favourites from his new children's collection *What the Wind Said* – humour and satisfaction guaranteed.

Supported by **EAST ANGLIAN**  
DAILY TIMES

---

James Cable Room 6.00 – 6.45pm PF2 £7

## EXCHANGE: ONLY JOKING

As Bill Manhire observed, "Lightness and play are no longer at odds with 'poetry': these days they inhabit the same territory." **David Kirby** and **Dennis O'Driscoll**, both well known for their quick wit, chart the peaks and pitfalls of poetry and humour.

---

Peter Pears Gallery 7.15 – 7.30pm FREE

## CLOSE READING

Join **Clive James** as he scrutinises a favourite poem.

Supported by  [www.suffolkartscentre.com](http://www.suffolkartscentre.com)

---

Jubilee Hall 8.00 – 9.45pm PF3 £14

## READING: GERRY CAMBRIDGE, IAN DUHIG, MIMI KHALVATI

Range and authenticity. **Gerry Cambridge** is a poet of formal versatility and contrasting subjects – from lyrical celebrations of his love of birds to humorous exposés of human nature at its most ridiculous and sublime. **Ian Duhig's** voracious spirit of enquiry yields erudite, witty and moving explorations that more than live up to his description of poetry as "the alchemy of mind and heart". With clarity of focus and grace, **Mimi Khalvati** achieves sustaining meditations on the laughter and the tears that underpin our lives.

Supported by **The Friends of The Poetry Trust**

---

James Cable Room 10.15 – 11.00pm FREE

## POETRY QUIZ

Seriously hilarious – old favourites like the 'Two-Faced Poets' and the brand new 'Spin the Poet' rounds – plus prizes! Come as a foursome or team up on the night.

# SATURDAY 8 NOVEMBER

Jubilee Hall 9.00 – 10.00am PF4 £8

## DISCUSSION: POETRY IN THE CULTURE

What is the poet's role? What issues must they address? Who do they speak for and who do they speak to? Global perspectives and personal experiences from two writers with exceptionally broad literary credentials. Join **Clive James** and **Antjie Krog** as they discuss with Arvon Foundation Director **Ariane Koek** the risks and responsibilities of being a poet.

Supported by **The Arvon Foundation**



---

Cinema Gallery 9.30 – 10.00am PF5 £6

## BLIND CRITICISM

A popular regular on Radio 4's 'Saturday Live', **Matt Harvey** together with editor and publisher **Ellen Pheathan** respond on the spot to two anonymous published poems.

---

Peter Pears Gallery 10.15 – 10.30am FREE

## CLOSE READING

Join **Barbara Hamby** as she scrutinises a favourite poem.

Supported by



Jubilee Hall 10.45am – 12.30pm PF6 £14

**READING: TIFFANY ATKINSON,  
DENNIS O'DRISCOLL, MATT SIMPSON**

Three generations. **Tiffany Atkinson** won the 2007 Jerwood Aldeburgh First Collection Prize for her warmth and sophistication, for the way her poems "cut to the quick of the contemporary, put the vernacular to work." (Gillian Allnutt) **Dennis O'Driscoll**, one of Ireland's most popular poets, engages with life's vicissitudes with grim comedy and compassion. Meticulous honesty and intelligence inform **Matt Simpson's** generous accounts of 'the music of what happens'.

The winner of the 2008 Jerwood Aldeburgh First Collection Prize will be announced at the start of this reading.

Supported by  JERWOOD  
CHARITABLE FOUNDATION

---

James Cable Room 11.00am – Noon PF7 £7

**ESSENTIAL POEMS**

**Clive James** and **Alan Jenkins** – who've enjoyed a long-standing poetry association through the *Times Literary Supplement* – make the case for some of the poems, past and present, they can't imagine living without.

---

James Cable Room 12.45 – 1.30pm FREE

**OPEN WORKSHOP**

Plug into the power of a roomful of writers: electrifying exercises with Aldeburgh's very own tried and tested poem-generators, **Michael Laskey** and **Jeni Smith**.



# SATURDAY 8 NOVEMBER

Cinema Gallery 12.45 – 1.15pm PF8 £7

## TALK: THE AFRIKAANS TRADITION

**Antjie Krog** reflects on Afrikaans, her first language – its social and political identity, its musical strengths – and the Afrikaans poetic tradition as she inherited it; and its place in South African culture today.

---

Peter Pears Gallery 12.45 – 1.00pm FREE

## THE POETRY CHANNEL

A trailer for The Poetry Trust's new digital adventure – imaginative poetry podcasts, mining gems from the Aldeburgh Poetry Festival's unique sound archive. Introduced by **Naomi Jaffa** and **Dean Parkin**.

---

Peter Pears Gallery 1.30 – 1.45pm FREE

## CLOSE READING

Join **Pauline Stainer** as she scrutinises a favourite poem.

Supported by  [www.poetry-trust.com](http://www.poetry-trust.com)

---

Jubilee Hall 2.00 – 3.00pm PF9 £8

## READING: NEW VOICES

Sample the range and individuality of four of the UK's most exciting 'emerging talents'. **Claire Crowther's** ambitious, necessary poems prove that experimental can be truly rewarding. A bold imaginative flamboyance fuels **Christopher James's** surreal wit. **Ellen Phethean** gives compulsively credible voice to the disenfranchised inhabitants of Newcastle's Byker Wall estate. Confidence and compassion shine through **Anna Woodford's** well-made poems about her European family history.

Supported by  and



Cinema Gallery 2.00 – 2.45pm PF10 £7

## POET ON POET: JENKINS ON RIMBAUD

In 2007 **Alan Jenkins** published a new translation of Rimbaud's *Le Bateau Ivre*. Touching on the life of Rimbaud, he will set the poem in its historical context and, with reference to other versions by Beckett and Lowell, will present his own solutions.

James Cable Room 3.15 – 3.45pm PF11 £7

## CRAFT TALK: THE UNCONSCIOUS MIND

"The poet operates like a pilot in the early days of aviation, relying mostly on his own experience and intuition to find his way." **David Kirby** examines how the unconscious is essential "to bring the craft in for a nice soft landing."

---

Peter Pears Gallery 3.15 – 3.45pm FREE

## THE MAGAZINE: THE DARK HORSE

Established in 1995 and based in Scotland, *The Dark Horse* is one of the UK's foremost poetry journals, with its dual focus on American and British poetry. Founder editor **Gerry Cambridge** provides insights into its history and guiding principles.

---

Jubilee Hall 4.00 – 4.45pm PF12 £10

## READING: CLIVE JAMES

**Clive James** has been steadfastly writing poetry throughout his glittering media and literary career. Celebrating the launch of *Angels Over Elsinore: Collected Verse 2003–2008*, here's a rare chance to experience the man in person – outrageous, funny, sharp and unashamedly well-read – delivering poems that unite formal brilliance with his trademark talent to entertain.

---

Cinema Gallery 4.00 – 4.30pm PF13 £6

## INTRODUCTION: IAN DUHIG ON MARTIN BELL

Though he was a prominent member of The Group in the fifties and reached a wide audience in the sixties with *Penguin Modern Poets*, **Martin Bell** (1918–78) is now at risk of neglect. **Ian Duhig** revisits the life and work and champions his international perspective and enduring qualities.

---

James Cable Room 5.00 – 5.30pm PF14 £7

## CRAFT TALK: THE LINE BREAK

The line break is the *sine qua non* of free verse. Not only does it establish a poem as poem but, being the most precise of instruments, defines its very nature. **Mimi Khalvati** explores ways in which we can employ and empower it, both as writers and readers.

# SATURDAY 8 NOVEMBER

Cinema Gallery 5.00 – 5.30pm PF15 £7

## CRAFT TALK: THE ENGINE OF A POEM

With examples from poets as diverse as Shakespeare, Hopkins, Whitman and Yusef Komunyakaa, **Barbara Hamby** goes beyond all the elements of craft – voice, image, line, repetition – to discover what really drives a poem.

---

James Cable Room 6.00 – 6.45pm PF16 £7

## POET ON POET: CAMBRIDGE ON MACCAIG

An overview from **Gerry Cambridge** of the major Scottish poet **Norman MacCaig** (1910–96), examining his development from the early Neo-apocalypse influenced work to the later luminous minimalism.

---

Peter Pears Gallery 6.00 – 6.15pm FREE

## CLOSE READING

Join **Tiffany Atkinson** as she scrutinises a favourite poem.

Supported by  [www.britain.gov.uk](http://www.britain.gov.uk)

---

Peter Pears Gallery 6.30 – 6.45pm FREE

## CLOSE READING

Join **Matt Simpson** as he scrutinises a favourite poem.

Supported by  [www.britain.gov.uk](http://www.britain.gov.uk)

---

Jubilee Hall 7.15 – 9.00pm PF17 £14

## READING: BARBARA HAMBY, ALAN JENKINS, YI SHA

Global emotional intelligence. In American **Barbara Hamby's** bravura poems – revelatory, heartening and often funny – high and low culture don't just collide, but go home together at the end of the night. The bleakness of life's disquieting and uncontrollable events are counteracted by **Alan Jenkins'** exhilarating formal skills and panache. A dissident Chinese master of the 'show not tell' rule, **Yi Sha** grounds his resonant and controversial narratives in matter-of-fact language. He reads with his Australian translator **Simon Patton**.

Supported by **The Woo Charitable Foundation**

Jubilee Hall 10.00 – 11.30pm PF18 £8

## WONDERMENTALIST CABARET

The Wondermentalist Cabaret is a heady mix of live poetry, music and audience participation. Hosted by the inimitable **Matt Harvey**, the evening features his 'Empath Man' – a superhero for our times – and comedian and musician **Jerri Hart** hitting all the right notes with 'Jazz Knitting' and even some 'Scat Origami'. And Festival poets will take to the stage: musical turns from **Gerry Cambridge** and **Philip Rush**, plus the Dead Poets Slam when **Barbara Hamby**, **Katrina Naomi**, **Ellen Phethean** and **Matt Simpson** will go head-to-head with their favourite poems from the past. Plus lots more. A real party for Saturday night!

Supported by

FAIRWEATHER STEPHENSON & CO.  
ARTISTS







# SUNDAY 9 NOVEMBER

**James Cable Room 9.00 – 9.45am PF19 £7**

## **EXCHANGE: ME TARZAN, YOU JANE**


Voice in poetry ranges widely – from tragic to wistful, angry to comedic – and often combines different tones. With reference to a variety of voices from Euripides to Allen Ginsberg, **Barbara Hamby** and **David Kirby** discuss how the best poems are a delight when heard out loud and subsequently grow richer for the silent reader.

---

**Cinema Gallery 9.15 – 9.45am PF20 £6**

## **INTRODUCTION: CLAIRE CROWTHER ON LORINE NIEDECKER**

**Lorine Niedecker** (1903–70) was a brilliant modernist poet, her poems reflecting her almost reclusive rural life. While her reputation has continued to grow among US poets and critics since her death, she remains strangely unknown in the UK. **Claire Crowther** expounds her virtues.

Supported by  and




# SUNDAY 9 NOVEMBER

Jubilee Hall 10.00 – 11.00am PF21 £7

## MASTERCLASS: MIMI KHALVATI

Three unpublished poems by up-and-coming writers undergo a thorough frisking. Appropriate form? Surprising language? Dead metaphor? Cunning line break? Inviting title? Join the discussion led by **Mimi Khalvati** whose skill as a poetry tutor is second-to-none.

Supported by 

---

Cinema Gallery 10.15 – 10.45am PF22 £7

## TALK: POETRY IN CHINA

**Simon Patton** discusses some of the features of contemporary Chinese poetry and introduces some of its leading lights, reflecting on the experience of translating the language into English.

---

James Cable Room 11.15 – 11.45am PF23 £7

## CRAFT TALK: WIDE READING

**Ian Duhig** shares Dr Johnson's view that nothing is useless to a poet. He argues that unorthodox, unstructured reading – beyond the usual academic and media diet – can benefit the poet and provoke and inform their poems.

---

Peter Pears Gallery 11.15 – 11.45am FREE

## JERWOOD ALDEBURGH READING

A short reading to showcase the talent and variety of three of the gifted poets who earlier this year took part in the second Jerwood Aldeburgh Seminar: *Towards A First Collection*.

Featuring **Graham Clifford**, **Katrina Naomi** and **Philip Rush**.

Supported by 

---

Jubilee Hall Noon – 12.45pm PF24 £9

## LECTURE: DENNIS O'DRISCOLL ON SEAMUS HEANEY

What dilemmas, personal and artistic, did **Seamus Heaney** face as a poet of the 'Troubles'? And to what extent has his poetry responded to 9/11 and the war in Iraq?

**Dennis O'Driscoll** considers the career of this Nobel poet who, while never shirking public themes, has never forfeited his artistic independence.

**Cinema Gallery 12.15 – 12.45pm PF25 £7**

## **CRAFT TALK: THE LURE OF IMPERFECTION**

Why do we assume that the work that goes into a poem is all about trying to make it as perfect as possible? For **Alan Jenkins** irregularities and oddities can be expressive too – “a sweet disorder in a dress” – and recognising this is as much a part of craft as anything.

---

**James Cable Room 1.00 – 2.00pm FREE**

## **OPEN MIC: POEMS & PIZZA**

A new lunchtime slot (with bar and ‘fast food’) for the perennially popular Festival platform for all-comers. Amuse and amaze the famously attentive Aldeburgh audience. Free speech. With stage, sound and lighting.

The signing-up sheet will be in the Jubilee Hall from the start of the Festival and names will be drawn to allocate all the two minute slots.

---

**Peter Pears Gallery 1.00 – 1.15pm FREE**

## **CLOSE READING**

Join **Yi Sha**, together with his translator **Simon Patton**, as he scrutinises a favourite poem.

Supported by  [www.aldeburghpoetryfestival.co.uk](http://www.aldeburghpoetryfestival.co.uk)

---

**Jubilee Hall 2.30 – 4.15pm PF26 £14**

## **READING: DAVID KIRBY, ANTJIE KROG, PAULINE STAINER**

Extending the territory. America’s **David Kirby** writes capacious poems that turn from observation to rumination, elegy to stand-up comedy, with a dazzling range of tone and reference. South Africa’s **Antjie Krog** has been described as the Pablo Neruda of Afrikaans. Her taboo-breaking poems – in Afrikaans and English translations – are concerned with love in all its rawness, justice and reconciliation. **Pauline Stainer**, a genuine English mystic, works with humility, concentration and the utmost perceptual precision to illuminate and connect our tangible and intangible worlds.

## **THE ALDEBURGH BOOKSHOP**

A comprehensive selection of books by this year’s Aldeburgh Poetry Festival poets, available online and on the main stage throughout the Festival.

**[www.aldeburghbookshop.co.uk](http://www.aldeburghbookshop.co.uk) 01728 452389**

## FRIDAY 7 NOVEMBER

JUBILEE HALL	CABLE ROOM	CINEMA GALLERY	PETER PEARS
6.00 – 7.00pm <b>FAMILY READING</b> Simpson	6.00 – 6.45pm <b>EXCH: ONLY JOKING</b> Kirby & O'Driscoll		
			7.15 – 7.30pm <b>CLOSE READING</b> James
8.00 – 9.45pm <b>READING</b> Cambridge, Duhig, Khalvati			
	10.15 – 11.00pm <b>POETRY QUIZ</b>		

## SATURDAY 8 NOVEMBER

9.00 – 10.00am <b>DISCUSSION</b> James, Koek, Krog		9.30 – 10.00am <b>BLIND CRITICISM</b> Harvey & Phethean	
			10.15 – 10.30am <b>CLOSE READING</b> Hamby
10.45am–12.30pm <b>READING</b> Atkinson, O'Driscoll, Simpson	11.00am – Noon <b>ESSENTIAL POEMS</b> James & Jenkins		
	12.45 – 1.30pm <b>OPEN WORKSHOP</b> Laskey & Smith	12.45 – 1.15pm <b>AFRIKAANS TRADITION</b> Krog	12.45 – 1.00pm <b>THE POETRY CHANNEL</b> Jaffa, Parkin
			1.30 – 1.45pm <b>CLOSE READING</b> Stainer
2.00 – 3.00pm <b>NEW VOICES</b> Crowther, James, Phethean, Woodford		2.00 – 2.45pm <b>POET ON POET: RIMBAUD</b> Jenkins	
	3.15 – 3.45pm <b>CRAFT TALK</b> Kirby		3.15 – 3.45pm <b>THE DARK HORSE</b> Cambridge
4.00 – 4.45pm <b>READING</b> Clive James		4.00 – 4.30pm <b>INTRO TO MARTIN BELL</b> Duhig	
	5.00 – 5.30pm <b>CRAFT TALK</b> Khalvati	5.00 – 5.30pm <b>CRAFT TALK</b> Hamby	
	6.00 – 6.45pm <b>POET ON POET: MACCAIG</b> Cambridge		6.00 – 6.15pm <b>CLOSE READING</b> Atkinson
			6.30 – 6.45pm <b>CLOSE READING</b> Simpson
7.15 – 9.00pm <b>READING</b> Hamby, Jenkins, Yi Sha			
10.00 – 11.30pm <b>WONDERMENTALIST CABARET</b> Harvey & Hart			

# THE TICKETS

## ADVANCE POSTAL BOOKING ONLY

**Monday 18 August: Exclusive priority booking for Friends of The Poetry Trust** (see below for details of how to join).

**Wednesday 27 August: Public booking opens.** Forms are processed in order of receipt but Friends of The Poetry Trust receive priority on a daily basis until Monday 8 September.

Please return forms to Poetry Festival Box Office, Aldeburgh Music, Snape Maltings Concert Hall, Snape, Suffolk IP17 1SP

---

## BY TELEPHONE OR ONLINE

**From Monday 8 September**

Poetry Festival Box Office: telephone 01728 687110  
[www.aldeburgh.co.uk](http://www.aldeburgh.co.uk) and follow link to Aldeburgh Poetry Festival

---

## IN PERSON

**From Monday 8 September**

Poetry Festival Box Office, 152 High Street, Aldeburgh  
Monday – Saturday, 9.30am – 4.30pm

---

## CONCESSIONS

For children under 16/full-time students/registered unemployed: £3 off each of the four main readings (PF3, 6, 17, 26); £2 off all other events.  
**No concessions available for workshops** (PF27–31).

---

## ACCESS

The Poetry Trust makes every effort to meet disability needs but regrettably, not all venues can offer full accessibility to the disabled or to those with access and mobility requirements. See page 4 for details of access to all venues or check with the Box Office (01728 687110) when booking.

---

## FRIENDS OF THE POETRY TRUST

Support The Poetry Trust's busy year-round programme of events, creative education projects, prizes and publications by becoming a Friend and receive priority booking for the Aldeburgh Poetry Festival. Annual subscription £15. To join and take advantage of this year's Friends priority booking period (see Postal Booking above), please complete the New Friends box on the booking form.

---

## ACCOMMODATION

There is a variety of places to stay in Aldeburgh and the surrounding area but please book early. The Tourist Information Centre offers a booking service for a selection of Quality Assured accommodation. Details at [www.suffolkcoastal.gov.uk/tourism](http://www.suffolkcoastal.gov.uk/tourism) or call 01728 453637 for the booking service (terms & conditions apply).

# THE BOOKING FORM

DATE	TIME	PF	EVENT	NO.	PRICE	TOTAL
<b>FRIDAY 7 NOVEMBER PROGRAMME</b>						
7/11	6.00pm	PF1	FAMILY READING: SIMPSON		£6	
7/11	6.00pm	PF2	EXCHANGE: KIRBY & O'DRISCOLL		£7	
7/11	8.00pm	PF3	CAMBRIDGE, DUHIG, KHALVATI		£14	
<b>SATURDAY 8 NOVEMBER PROGRAMME</b>						
8/11	9.00am	PF4	DISCUSSION: JAMES & KROG WITH KOEK		£8	
8/11	9.30am	PF5	BLIND CRITICISM: HARVEY & PHETHEAN		£6	
8/11	10.45am	PF6	ATKINSON, O'DRISCOLL, SIMPSON		£14	
8/11	11.00am	PF7	ESSENTIAL POEMS: JAMES & JENKINS		£7	
8/11	12.45pm	PF8	TALK: KROG ON AFRIKAANS TRADITION		£7	
8/11	2.00pm	PF9	NEW VOICES		£8	
8/11	2.00pm	PF10	POET ON POET: JENKINS ON RIMBAUD		£7	
8/11	3.15pm	PF11	CRAFT TALK: KIRBY		£7	
8/11	4.00pm	PF12	CLIVE JAMES		£10	
8/11	4.00pm	PF13	INTRODUCTION: DUHIG ON BELL		£6	
8/11	5.00pm	PF14	CRAFT TALK: KHALVATI		£7	
8/11	5.00pm	PF15	CRAFT TALK: HAMBY		£7	
8/11	6.00pm	PF16	POET ON POET: CAMBRIDGE ON MACCAIG		£7	
8/11	7.15pm	PF17	HAMBY, JENKINS, YI SHA		£14	
8/11	10.00pm	PF18	WONDERMENTALIST CABARET		£8	
<b>SUNDAY 9 NOVEMBER PROGRAMME</b>						
9/11	9.00am	PF19	EXCHANGE: HAMBY & KIRBY		£7	
9/11	9.15am	PF20	INTRODUCTION: CROWTHER ON NIEDECKER		£6	
9/11	10.00am	PF21	MASTERCLASS: KHALVATI		£7	
9/11	10.15am	PF22	TALK: PATTON ON POETRY IN CHINA		£7	
9/11	11.15am	PF23	CRAFT TALK: DUHIG		£7	
9/11	Noon	PF24	LECTURE: O'DRISCOLL ON HEANEY		£9	
9/11	12.15pm	PF25	CRAFT TALK: JENKINS		£7	
9/11	2.30pm	PF26	KIRBY, KROG, STAINER		£14	
<b>SUB-TOTAL</b>						

SUB-TOTAL CARRIED OVER							
DATE	TIME	PF	EVENT	NO.	PRICE	TOTAL	
<b>FRIDAY 7 NOVEMBER WORKSHOPS</b>							
7/11	10.30am	PF27	CAMBRIDGE – PHOTOGRAPHER'S EYE		£40		
7/11	10.30am	PF28	KHALVATI – TOWARDS A SEQUENCE		£40		
7/11	2.30pm	PF29	KIRBY – THE NAKED POEM		£20		
7/11	2.30pm	PF30	HAMBY – PRAYERS, INSTRUCTIONS etc		£20		
<b>SATURDAY 8 NOVEMBER WORKSHOP</b>							
8/11	10.30am	PF31	WOODFORD – PUTTING THE 'I' IN		£20		
<b>TICKET TOTAL</b>							
Postage and processing						£1	
NEW FRIENDS I would like to become a Friend of The Poetry Trust. Mark your envelope NEW FRIEND					£15		
<b>GRAND TOTAL</b>							

Please print clearly

FIRST NAME ..... SURNAME .....

ADDRESS .....

.....

.....

POSTCODE ..... TELEPHONE .....

EMAIL .....

Cheques payable to Aldeburgh Music. Please leave your cheque open if you are booking a workshop (PF27 to PF31) because of their limited availability.

If paying by Mastercard, Visa, Switch/Maestro or Artscard please complete:

--	--	--	--	--	--	--	--	--	--	--	--	--	--	--	--	--	--	--	--	--

Issue No. (Switch/Maestro)

Valid from (Switch/Maestro)

EXPIRY DATE ..... SIGNATURE .....

Please tick this box if you do **NOT** wish to join The Poetry Trust's Mailing list

- The management reserves the right to refuse admission or to change or cancel the advertised programme.
- Cameras and tape recorders may not be used at performances.
- We regret that event tickets cannot be exchanged or money refunded.

Please note that workshop tickets returned after 24 October will only be accepted at the discretion of the Box Office.

Please send your booking form to: Poetry Festival Box Office, Aldeburgh Music, Snape Maltings Concert Hall, Snape, Suffolk IP17 1SP

# THE POETRY PAPER



**ANNUAL, INNOVATIVE & BEAUTIFUL**

**THE POETRY PAPER IS ALL ABOUT  
THE POETS WHO TAKE PART IN THE  
POETRY TRUST'S MAJOR EVENTS**

**NEW POEMS, INTERVIEWS & ARTICLES**

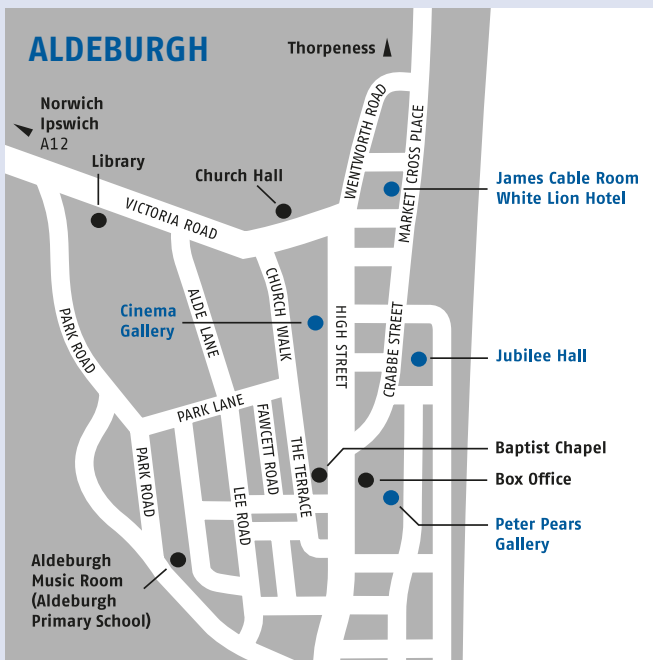
**SERIOUSLY ENTERTAINING**

**COMPLETELY FREE**

**Issue Five available from 7 November 2008  
To receive your free copy (UK only)  
E: [info@thepoetrytrust.org](mailto:info@thepoetrytrust.org) T: 01986 835950  
or pick one up at the Festival**

# SUNDAY 9 NOVEMBER

JUBILEE HALL	CABLE ROOM	CINEMA GALLERY	PETER PEARS
	<b>9.00 – 9.45am</b> <b>EXCH: ME TARZAN, YOU JANE</b> Hamby & Kirby	<b>9.15 – 9.45am</b> <b>INTRO TO LORINE NIEDECKER</b> Crowther	
<b>10.00 – 11.00am</b> <b>MASTERCLASS</b> Khalvati		<b>10.15 – 10.45am</b> <b>POETRY IN CHINA</b> Patton	
	<b>11.15 – 11.45am</b> <b>CRAFT TALK</b> Duhig		<b>11.15 – 11.45am</b> <b>JERWOOD ALDEBURGH READING</b> Clifford, Naomi, Rush
<b>Noon – 12.45pm</b> <b>LECTURE: ON HEANEY</b> O'Driscoll		<b>12.15 – 12.45pm</b> <b>CRAFT TALK</b> Jenkins	
	<b>1.00 – 2.00pm</b> <b>OPEN MIC</b>		<b>1.00 – 1.15pm</b> <b>CLOSE READING</b> Yi Sha (with Patton)
<b>2.30 – 4.15pm</b> <b>READING</b> Kirby, Krog, Stainer			
		ALL EVENTS IN THE PETER PEARS GALLERY ARE FREE BOX OFFICE: 01728 687110	




# THE WORKSHOPS

**FRIDAY 7 NOVEMBER**

**Peter Pears Gallery 10.30am – 3.30pm PF27 £40**

## **GERRY CAMBRIDGE – THE PHOTOGRAPHER'S EYE**

Poets need to see afresh. An all-day opportunity to zoom in on the details that frequently go unseen, at the same time as looking at poetic forms – especially the sonnet – and other techniques and strategies for writing durable poems.

Supported by 


---

**Cinema Gallery 10.30am – 3.30pm PF28 £40**

## **MIMI KHALVATI – TOWARDS A SEQUENCE**

A chance to write new poems, through a variety of angles and approaches, which will look towards developing a lyric sequence. Collage and assemblage techniques will be introduced and examples of short sequences discussed.

Participants will receive group feedback on their drafts and suggestions for further development.

Supported by 

---

**James Cable Room 2.30 – 4.30pm PF29 £20**

## **DAVID KIRBY – THE NAKED POEM**

The creative process consists of particulars, craft, and the creation of meaning. The eye-catching image and the telling detail that draws the reader in always come first. A chance to work on the particulars that clothe the poem and give it its meaning.

Supported by 

**Aldeburgh Church Hall 2.30 – 4.30pm PF30 £20**

## **BARBARA HAMBY – PRAYERS, INSTRUCTIONS & OTHER FORMS OF SUPPLICATION**

Whether you believe in God or not, the poem calls out to someone – that mysterious listener or congregation of readers. An opportunity to read examples and then write your own.

Supported by



---

**Aldeburgh Music Room 2.30 – 4.30pm CLOSED WORKSHOP**

## **MATT SIMPSON – FULL OF LIFE**

Designed to harness the creative writing skills of older people, Suffolk Artlink's 'Full of Life' project proved so successful that participants asked for further workshop opportunities. Matt Simpson will be providing the keys to unlock more poems.

Supported by



---

## **SATURDAY 8 NOVEMBER**

**Baptist Chapel 10.30am – 12.30pm PF31 £20**

## **ANNA WOODFORD – PUTTING THE 'I' IN**

With Sharon Olds' poem 'Take the I Out' as a starting point, this workshop will focus on using personal, or apparently personal, material in poetry. A safe space to explore the first person narrator in exercises themed around memory and childhood.

Supported by



and



### **Maximum 12 per workshop**

The Poetry Trust makes every effort to meet disability needs but regrettably, not all workshop venues can offer full accessibility to the disabled or to those with access and mobility requirements. Please see page 4 for details or check with the Box Office when booking.

**BOX OFFICE: 01728 687110 WWW.THEPOETRYTRUST.ORG**

# THE POEMS

## ODE TO THE POTATO

"They eat a lot of French fries here," my mother announces after a week in Paris, and she's right, not only about *les pommes frites* but the celestial tuber in all its forms: *rotie*, *purée*, not to mention au gratin or boiled and oiled in *la salade niçoise*.

*Batata edulis* discovered by gold-mad conquistadors in the West Indies, and only 100 years later in *The Merry Wives of Windsor* Falstaff cries, "Let the skie raine Potatoes," for what would we be without you—lost in a sea of fried turnips, mashed beets, roasted parsnips? *Mi corazón, mon coeur*, my core is not the heart but the stomach, tuber of the body, its hollow stem the throat and esophagus, leafing out to the nose and eyes and mouth. Hail the conquering spud, all its names marvelous: *Solanum tuberosum*, *Igname*, Caribe, Russian Banana, Yukon Gold. When you turned black, Ireland mourned. O Mr. Potato Head, how many deals can a man make before he stops being small potatoes? How many men can a woman drop like a hot potato? Eat it cooked or raw like an apple with salt of the earth, apple of the earth, *pomme de terre*. Tuber, tuber burning bright in a kingdom without light, deep within the earth where the Incan potato gods rule, forging their golden orbs for the world's ravening gorge.

**Barbara Hamby**

*Babel* (University of Pittsburgh Press 2004)

## 'USE COMPLETE SENTENCES'

French oral practice: Teacher's nervous look  
to where I stand in turn and raise my book:

'My father has grey horses on his head...'  
She snorts. Her face grows dark while mine glows red.

flogging dead brains for something true to say  
when Dad's grey horses took my breath away:

they took the air to run rings round the sun.  
Now (with a crib) I work through Yang Tzu-yun,

where horses were his metaphors for breath.  
These sentences are sentences of death.

**Ian Duhig**

*The Speed of Dark* (Picador 2007)

## LIFE'S A DRAG

Sean's on an ASBO  
where he's got a new tag

Nana's phoning NACRO  
her shoulders sag

Mam takes an ASPRO  
lights her fortieth fag

Kylie's on the METRO  
someone whispers, Slag

Dad shops at NETTO  
with his black and yellow bag

Scotty runs a DISCO  
down the Nag's head.

All of them unhappy.

**Ellen Phethean**

*Wall* (Smokestack 2007)

## SONNET (I WILL ALWAYS REMEMBER)

I will always remember the way you walked  
in last night – you moved as if sparks  
flew from you your eyes a mean  
messy blue then you held me as always

so that I had to raise my eyes up to your secure mouth  
your face determined your hands your neck your shoulders  
cut under the impeccable shirt I smelled  
on you the perfume of power as your dark head

bent down to greet every child something  
authoritarian stayed with your body as of one  
who always lies on top your hands moved  
with the orders of a boss this morning I bring

breakfast – on the bedside table you put my  
monthly allowance –  
and I see how the word finance also breathes the  
word violence

**Antje Krog**

*Down to My Last Skin* (Random House 2000)

## IN DEEP

Keeping my head down, I hear your voice,  
but not the words you speak,  
bouncing from blue-glazed tiles.

It's not so much that I'm not listening.  
Just not hearing. In deep. Not up to but over  
my ears, searching the bottom for quietness  
and trying to keep steady, alternating lengths  
of breaststroke, crawl. I have two  
mosaic dolphins down here to contemplate,  
their unforced smiles, the way they have,  
like saucy lovers, of touching one another.  
It's not that I don't realise  
we are, and have for long, been in  
this together. Goggles off and heavier each step,  
I wade out to shower, asking what you said.

**Matt Simpson**

*In Deep* (Shoestring Press 2006)

## LOST CHILD

Scrape the ditch that fits Hob's Moat  
to Hatchford Brook. Look through oak roots,  
the horse field, uphill to Elmdon.  
Is she hiding behind that sky-blue Lexus?  
Shout toward the airport. Planes rise  
and fall as if ground were a shaking blanket.  
Up there, the air hostesses smile.  
*Inflate your own life-jacket first.*  
The small original airport building stands  
apart, a mother at a school gate.  
Pearl was playing quietly alone.  
My ear is like a shell the wind swept.

**Claire Crowther**

*Stretch of Closures* (Shearsman Books 2007)

## MOTHER IN DREAMS

My mother in dreams, dressed  
like a refugee with penny-blacks where  
her eyes should be, says in a TV voice  
now, girl, what took you? Her forehead  
franked with hurt as I lick her eyelids  
shut and double her back through the tight  
slit of the two-up-two-down-town-house  
where my stepmother crackles with static,  
cross-legged, purified, and fat with imminent  
delivery. Must return my mother's skin,  
the slow cyrillic of that unschooled hand.  
Wake tangled in that cord, or choke  
on words that just won't cut it.

**Tiffany Atkinson**

*Kink and Particle* (Seren 2006)

## THE THOUGHT OF SNOW

The thought of snow,  
At least, I like, because –  
Despite what it makes  
Of the world below  
(Or that world makes of it) – it starts  
With the aim of perfection:  
Building itself to a lattice of white  
On every mote of dust  
Miles above, in cold –  
Though it dies in disgrace in the streets of towns:  
A tramp who had known big ideas,  
A genuine artist, once,  
A wasted prodigy, but beginning well.

**Gerry Cambridge**

*Madame Fi Fi's Farewell* (Luath Press 2003)

## SUNDAY

In a book on art  
I came across  
two paintings by Van Gogh  
which hadn't been mounted on banknotes  
These two celebrated works  
were unremarkable paintings  
One was called *Gauguin's Chair*  
The other  
was called *Van Gogh's Chair*  
Although I didn't go so far  
as to buy the book  
I was  
so moved by what I saw  
that –  
like "a chariot driven south  
to get north" –  
I got on the wrong trolley bus  
for home

**Yi Sha (translated by Simon Patton)**

*Starve the Poets! Selected Poems* (Bloodaxe 2008)

# THE BLOGS

Who's coming and what they're doing  
(corresponding page numbers in **bold**).



**Tiffany Atkinson** was born in Berlin in 1972 to an army family and has lived in Wales since 1993. She currently lectures in English at the University of Wales, Aberystwyth. Her collection *Kink and Particle* (2006) was a Poetry Book Society Recommendation and won the Jerwood Aldeburgh First Collection Prize. [Reading 7](#) / [Close Reading 10](#)



**Gerry Cambridge** was born in Lancashire in 1959 and has lived in Scotland since 1972. A former freelance journalist and natural history photographer, he founded the Scottish-American poetry magazine *The Dark Horse* in 1995. His recent collections are *Madame Fi Fi's Farewell and Other Poems* (2003) and *Aves* (2007). [Exhibition 4](#) / [Reading 5](#) [The Dark Horse 9](#) / [Talk \(MacCaig\) 10](#) / [Cabaret 11](#) / [Workshop 18](#)



**Claire Crowther** has worked as a consumer journalist, editor and communications director. She lives in the West Country and is currently poet in residence at Dorich House. Her collection *Stretch of Closures* (2006) was shortlisted for the Jerwood Aldeburgh First Collection Prize. [Reading 8](#) / [Introduction \(Niedecker\) 13](#)



**Ian Duhig** was born in 1954 to Irish parents and lives in Leeds. Winner of the National Poetry Competition and the Forward Prize for best poem, he has held Royal Literary Fund fellowships at Lancaster, Durham, Newcastle and Leeds. His fifth collection *The Speed of the Dark* (2007) was shortlisted for the TS Eliot Prize. [Reading 5](#) / [Introduction \(Bell\) 9](#) / [Craft Talk 14](#)



**Barbara Hamby** was born in New Orleans and raised in Honolulu. She teaches at Florida State University in Tallahassee, where she lives with her husband, the poet David Kirby. Her third collection, *Babel*, won the Donald Hall Prize in 2004, her fourth, *All-Night Lingo Tango*, will be published in Spring 2009. [Close Reading 6](#) / [Craft Talk 10](#) [Reading 10](#) / [Cabaret 11](#) / [Exchange \(with Kirby\) 13](#) / [Workshop 19](#)



**Jerri Hart** – comedian, singer, trumpet-player and guitarist – has been entertaining audiences for over twenty years including ten years with his band, *The Rhythm Doctors*. An integral part of the Wondermentalist Cabaret and frequent collaborator with Matt Harvey, he also tours a

one-man show featuring comic versions of jazz favourites.

[Cabaret 11](#)



**Matt Harvey** was born in Cheshire in 1962 and now lives in Totnes. A Radio 4 regular, he can currently be heard on Saturday Live and also has a Desktop Poetry slot in the Saturday *Guardian's* 'Work' section. His collection *The Hole in the Sum of My Parts* (2005) is now in its third reprint.

[Blind Criticism 6](#) / [Cabaret 11](#)



**Christopher James** was born in Paisley in 1975, studied at Newcastle and UEA, and lives in Suffolk. A Gregory Award recipient, he has won the Bridport Prize and the Ledbury Poetry Competition twice. He participated in the 2004 Festival Masterclass and published *The Invention of Butterfly* in 2006.

[New Voices Reading 8](#)



**Clive James** was born in Australia in 1939 and has lived in England since 1962. A seminal TV broadcaster, he is the author of over twenty books, including novels, travel writing, essays, memoir, criticism and poetry. In 2003 he published a collected poems, *The Book of My Enemy*, and is launching *Angels Over Elsinore* at Aldeburgh.

[Close Reading 5](#) / [Discussion 6](#) / [Essential Poems 7](#) / [Reading 9](#)



**Alan Jenkins** was born in Surrey in 1955, brought up in London and studied at the University of Sussex. Deputy Editor of the *Times Literary Supplement*, he has published five collections, most recently *A Shorter Life* (2005), shortlisted for the Forward Prize. *Drunken Boats*, his translation of Rimbaud's *Le Bateau Ivre*, was published last year.

[Essential Poems 7](#) / [Talk \(on Rimbaud\) 8](#) / [Reading 10](#) / [Craft Talk 15](#)



**Mimi Khalvati** was born in Tehran, Iran in 1944 and lives in North London. Her sixth collection, *The Meanest Flower* (2007), was a *Financial Times* Book of the Year and shortlisted for the TS Eliot Prize. Her work has been translated into nine languages and she received a

Cholmondeley Award in 2006.

[Reading 5](#) / [Craft Talk 9](#) / [Masterclass 14](#) / [Workshop 18](#)



**David Kirby** was born in Baton Rouge, Louisiana. Married to poet Barbara Hamby, he has taught all over America and in Europe and is now a Professor of English at Florida State University. He has published more than twenty books, most recently *The House on Boulevard St.: New and*

*Selected Poems* (2007). [Exchange \(with O'Driscoll\) 5](#) / [Craft Talk 9](#) / [Exchange \(with Hamby\) 13](#) / [Reading 15](#) / [Workshop 18](#)



**Ariane Koek** was born in California in 1962. She worked for the BBC as a producer in both television and radio for sixteen years, making documentaries and discussion programmes as well as commissioning and producing new writing and plays. She is now Director of The Arvon Foundation. [Discussion 6](#)



**Antjie Krog** was born on a farm in the Orange Free State, South Africa in 1952. Writing in Afrikaans as well as English, she has won every major South African literary prize. She has published eleven collections of poems, translations and non-fiction, most notably *Country of My Skull*, an account of the hearings of the Truth and Reconciliation Commission.

[Discussion 6](#) / [Talk \(Afrikaans Tradition\) 8](#) / [Reading 15](#)



**Dennis O'Driscoll** was born in Tipperary in 1954. He has published eight books of poetry including *New and Selected Poems* (2004) and *Reality Check* (2007), shortlisted for the *Irish Times* Poetry Now Prize 2008. He edited *The Bloodaxe Book of Poetry Quotations* (2006) and his latest book is *Stepping Stones: Interviews with Seamus Heaney* (2008).

[Exchange \(with Kirby\) 5](#) / [Reading 7](#) / [Lecture \(on Heaney\) 14](#)



**Simon Patton** works as a literary translator specialising in contemporary Chinese literature and teaches at the University of Queensland. Since 2002, he has co-edited (with Yu Jian) the Chinese section of the Poetry International website. In 2007 he was highly commended in Queensland's Thomas Shapcott Prize for an Emerging Poet.

[Reading \(as Yi Sha's translator\) 10](#) / [Talk \(Poetry in China\) 14](#) / [Close Reading \(as translator\) 15](#)



**Ellen Phethean** works as a poet and sound artist, playwright and editor. She runs Diamond Twig Press, which she founded with Julia Darling, and teaches Creative Writing at the Centre for Lifelong Learning in Newcastle. Her collection *Wall*, a teen novel in poems, was written while she was writer-in-residence in Byker, Newcastle.

[Blind Criticism 6](#) / [New Voices Reading 8](#) / [Cabaret 11](#)



**Yi Sha** was born in 1966 in Chengdu, China and grew up in the Maoist era. He studied at Beijing Normal University and now works as an assistant university professor. A highly controversial poet in China, he has also published fiction and essays. *Starve the Poets* (2008), to be launched at Aldeburgh, is his first English publication outside China. [Reading 10](#) / [Close Reading 15](#)



**Matt Simpson** was born in Bootle in 1936. Now retired, he was a senior lecturer in English at Liverpool Hope University and is author of six collections, most recently *In Deep* (2006). Also a well known children's poet, his new volume for younger readers *What the Wind Said* is published this year. [Family Reading 5](#) / [Reading 7](#) / [Close Reading 10](#) [Cabaret 11](#) / [Workshop 19](#)



**Pauline Stainer** was born in Stoke-on-Trent and read English at Oxford. She now lives in Suffolk. She has published seven collections – four of them Poetry Book Society Recommendations – most recently *New & Selected Poems: The Lady & The Hare* (2003). Her eighth, *Crossing the Snowline*, will be launched at Aldeburgh. [Close Reading 8](#) / [Reading 15](#)

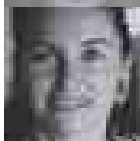


**Anna Woodford** was born in 1973 and lives in Newcastle upon Tyne. She teaches Creative Writing for the Open University and at Newcastle University. A recipient of a Gregory Award and an Arvon/Jerwood Apprenticeship, she has published two pamphlets – *The Higgins' Honeymoon* (2001) and *Trailer* (2007), a Poetry Book Society Choice. [New Voices Reading 8](#) / [Workshop 19](#)

## JERWOOD ALDEBURGH POETS



**Graham Clifford** was born in Portsmouth in 1973 and is a primary school teacher in London. A UEA Creative Writing MA graduate, he participated in the 2005 Festival Masterclass and won the Biscuit Publishing competition in 2007. [Reading 14](#)



**Katrina Naomi** was born in Margate and lives in South London. A Creative & Life Writing MA graduate from Goldsmiths College, she won the Templar Poetry Pamphlet Competition – *Lunch at the Elephant & Castle* is published in October. [Cabaret 11](#) / [Reading 14](#)



**Philip Rush** was born in Middlesex in 1956 and is an English teacher in Stroud. His poems were in *New Poetries IV* (2007) and his most recent pamphlet is *How to Get More Fun from Asparagus and Apples*. [Cabaret 11](#) / [Reading 14](#)

## THE POETRY TRUST

The Poetry Trust is one of the UK's flagship poetry organisations, delivering a year-round live and digital programme, creative education opportunities, courses, prizes and publications.

- Aldeburgh Poetry Festival
- Poetry Prom (Snape Maltings Concert Hall)
- Poetry at The Cut (Halesworth)
- The Poetry Treatment (Norfolk & Norwich Hospital)
- Writing Seminars
- Jerwood Aldeburgh First Collection Prize
- The Poetry Paper
- The Poetry Channel

Please become a Friend of The Poetry Trust. For £15 a year, you benefit from priority Festival booking and help us thrive.

[www.thepoetrytrust.org](http://www.thepoetrytrust.org)



---

## SILK PEARCE

Silk Pearce is a design-led communications consultancy offering everything from brand development and identity through to literature, packaging and websites.

For more information please contact Peter Silk or Jack Pearce:

Tel: 01206 871001 or Email: [design@silkpearce.com](mailto:design@silkpearce.com)

[www.silkpearce.com](http://www.silkpearce.com)

---

## ANDREW FOSTER

For the fifth successive year, The Poetry Trust and Silk Pearce have commissioned a leading UK illustrator to create a visual response to the Festival's identity.

**Andrew Foster:** "Whether personal or commissioned, my work forges a link between abstract mark making and graphic communication with strong content underlying the aesthetics."

Represented by Central Illustration Agency

Tel: 0207 734 7187 or Email: [info@centralillustration.com](mailto:info@centralillustration.com)

[www.centralillustration.com](http://www.centralillustration.com)



# the **poetry** channel

---

**ANNOUNCING THE NEW DIGITAL  
PLATFORM FROM THE POETRY TRUST**

**LAUNCHED NOVEMBER 2008**

**IMAGINATIVE POETRY PODCASTS:  
THREE EPISODES OF THE POEM SHOW**

**PLUS POET IN PROFILE: ALASTAIR REID**

**BROADCAST-QUALITY PROGRAMMES**

**FEATURING SPECIALLY  
COMMISSIONED RECORDINGS**

**AND THE UNIQUE SOUND ARCHIVE OF  
THE ALDEBURGH POETRY FESTIVAL**

**THE POETRY CHANNEL FOR THE  
DIGITAL AGE – GETTING THE WORD OUT**

[www.thepoetrytrust.org](http://www.thepoetrytrust.org)

